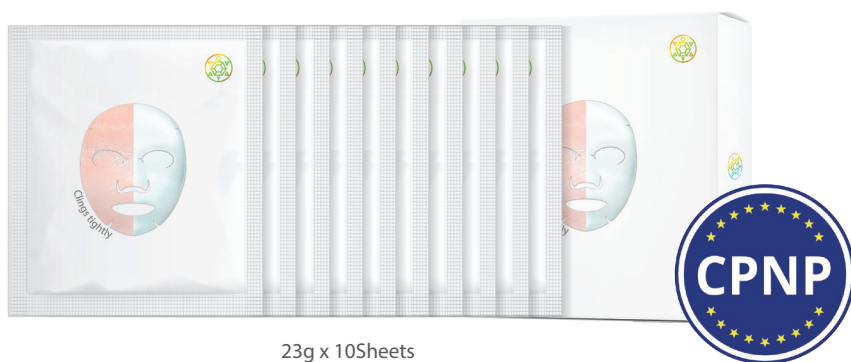




NATURAL RX

POST-PROCEDURE MASK



23g x 10Sheets

After

- IPL
- CO2 laser
- Surgical laser
- Meso-therapy
- Fraxel laser
- Peeling

NATURAL RX is clinically tested and specifically formulated for the relief of damaged skin following dermatological procedures such as peeling, TS, IPL, FRAXEL, CO2 and other associated laser treatments.

NATURAL RX Active ingredients

I Plant Stem Cell (Centella Asiatica)

Accelerated post-procedure skin regeneration



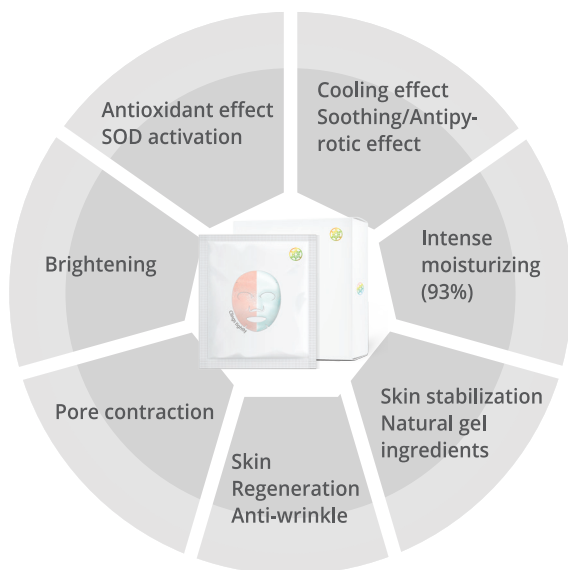
I Acetyl-Hexapeptide

Anti-wrinkle effect created by controlling secretion of Acetylcholine, which in turn affects muscle contraction in wrinkles through control of SNARE complexes. Anti-ageing effect created by controlling excessive secretion of Catecholamine.

I EGF

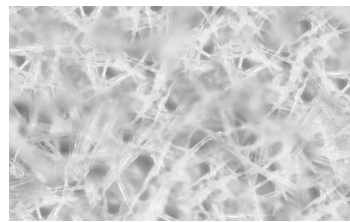
Accelerates healing process by stimulating proliferation and segmentation of fibroblast and dead skin cells

NATURAL RX Special Features



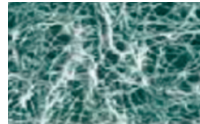
I Bio-cellulose

Nano-sized fibers originating from natural micro-organisms attached near irritated skin and pores. This enables the efficient delivery of active ingredients into dermis.



*** What is Bio-cellulose?

A highly polymerized compound, which is patented in Korea (No.0405775). It is created by fermentation of natural ingredients (coconut water) and Acetobacter xylinum using mass culture technology. This results in cellulose created by microbial cultures, which has the same structure as the cellulose plant cell walls are composed of.



Bio-cellulose [x200,000 magnification]

- 3 dimension net structure
- Fiber diameter: 0.002-0.05 microns
- High physical strength
- Strong absorption (non-woven fabric x 10)
- High density (non-woven fabric x 500)

NATURAL RX How to use

- 01 Cleanse the treated area after the dermatological treatments.
- 02 Remove the non-woven fabric and apply Natural RX mask on treated area, then remove the plastic film layer.
- 03 Using a hand or relevant tools, smooth the air bubbles toward mask edges, until the bio-cellulose mask adheres tightly.
- 04 After 15 to 20 minutes, remove the mask and smooth the excess onto the rest of the face. (Do not need further cleansing)