



Harmony XL PRO

Spectrum of Solutions

- Skin Remodeling
- Vascular Lesions
- Pigmented Lesions
- Tone & Texture
- Hair Removal
- Acne
- Tattoo Removal

- Multi-Application Platform • Proven in Extensive Clinical Studies
- Extendible and Upgradeable • Over 65 FDA-Cleared Indications
- Plug & Play Software • No Disposables



When everything works
together perfectly,
that's Harmony.

Alma™ Harmony™ combines a full spectrum of aesthetic indications, advanced technologies and excellent clinical results to create complete aesthetic harmony.



A Complete, All-Inclusive Solution

Alma Harmony is a powerful, all-inclusive treatment solution for a wide range of aesthetic needs. The multi-application platform is designed to treat a variety of indications, offering a full spectrum of technologies, applicators, tips and treatment methods that achieve outstanding results.

Safe and Effective for All

Alma Harmony features an array of advanced applications that allow you to provide highly effective, reliable and safe treatments for a variety of challenging skin concerns. Each technology and treatment approach has a first-rate safety record, proven in extensive clinical studies. Practitioners can treat all areas of the body, treat all skin types, and meet the needs of all populations.

Spectrum of Opportunities

The treatment scope of the Alma Harmony system adds a proven, results-driven income stream to your practice, offering significant revenue growth. The advantages of safe and effective treatment solutions as well as dramatic, yet **natural-looking** results, encourages patients to consider additional treatment types and recommend your practice to others, thereby **increasing its profit potential**.

A Modular Approach for Better Clinical Results

The Harmony platform consists of multiple modules offering powerful solutions for 6 major indications, each of which may be treated using a single technology or a combination of technologies and treatment approaches. The modules are **designed to work independently or together** as a single cohesive, harmonious system.

Multi-Generational

Harmony opens the door to multiple generations, addressing the aesthetic concerns of patients of all ages- from **teens to older adults**. The versatility of the Harmony platform allows you to provide tailored, customized solutions for every age group, while also building long term relationships by meeting their needs as they change over time.

The Alma Harmony system is upgradable and expandable, allowing you to specialize in any aesthetic segment and expand your clinical offerings as your practice grows.

Spectrum of Solutions

Alma Harmony offers powerful treatment solutions for six major indications.

01

SKIN REMODELING & LIFTING

Painless and precisely adapted to treat delicate areas

Challenging age-related skin imperfections including wrinkles, fine lines, photodamage, uneven skin tone and skin laxity can be significantly improved using the Fractional non-ablative Q-Switched 1064 laser, Near Infrared technology, or a combination of both for enhanced results. Each method has been clinically proven to be safe and effective for **all skin types (I-VI)** as well as for thin and delicate areas of the skin such as the face, neck and décolleté areas. Harmony's skin remodeling treatments effectively address existing indications while also helping to bolster the skin **against future aging**.

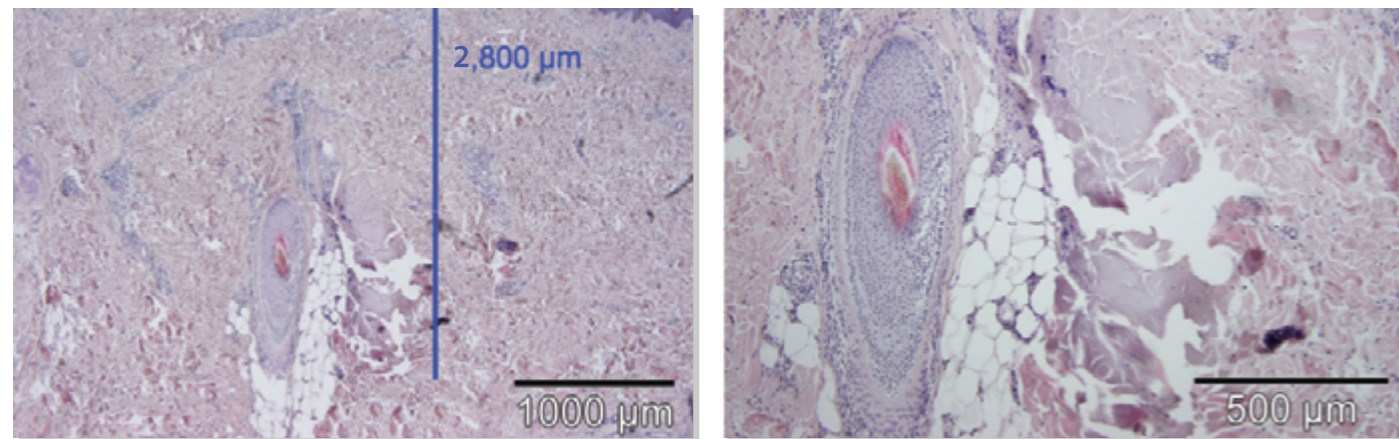
ClearLift™ with Fractional Q-Switched Nd: YAG Laser

Alma Lasers has developed **the first fractional non-ablative Q-Switched laser**, allowing practitioners to use the powerful benefits of a high intensity Q-Switched laser for the treatment of skin imperfections associated with aging skin- including thin and delicate areas.

While most laser procedures produce a thermal effect to stimulate collagen renewal, Alma Harmony uses a specially designed fractional Q-Switched laser to achieve a deep mechanical effect, focusing the energy *beneath* the epidermis. This creates a **controlled dermal wound** while leaving the epidermis intact. The wound healing process stimulates growth of new collagen as well as contracture and tightening of the tissue.

The treatment is a 'lunchtime procedure' that is **virtually painless** with **no downtime**, no need for pre-treatment anesthetic and is safe for all skin types.

Histology



Disintegration of sun damaged skin next to appendages, up to 2,800 microns deep

Courtesy of Uwe Paasch, M.D., Ph.D. University of Leipzig, Germany

"Based on my histology analysis, it is evident that the epidermis is in large proportions intact but there is clearly visible damage in the sun damaged mid-upper dermis associated with collagen disruption and disintegration. The ClearLift Q-Switched fractional laser is **a very promising modality** that enables non-ablative collagen injury and remodeling underneath a mostly intact epidermis."

Uwe Paasch, M.D., Ph.D. University of Leipzig, Germany



Courtesy of:
Dr. Bruce Katz,
Juva Skin & Laser Center, NY

Courtesy of:
KeeLee Tan, MD. Rejuvenate Clinic, Perth,
Western Australia

[More about skin remodeling & texture >>](#)

Latest Innovations

Alma ClearLift 4D Control the precise depth of treatment

Variable depth control allows practitioners to combine both deep and superficial treatment approaches depending on the area being treated, the skin type or the indication.

In addition to our classic tip, ClearLift4D offers four levels of depth penetration:

- **Superficial Plus** (25-100 μm)
for indications at the epidermal level
- **Superficial** (100-450 μm)
for indications at the epidermal level
- **Classic** (450-750 μm)
for indications within the mid-upper dermis level
- **Deep** (750-1500 μm)
for indications within the mid-dermis level
- **Deep Plus** (1500-2500 μm)
for indications within the mid-dermis level

Superficial tips are designed for thinner, more delicate areas as well as for fine lines, skin laxity and superficial pigmentation and vascular lesions.

Deeper tips treat thicker skin, deeper wrinkles and deeper pigmentation and vascular lesions. The classic tip treats all indications at the junction between the epidermis and dermis.



ClearLift Roller High-speed, fractional non-ablative Q-Switched laser

The first fractional **scanning** Q-Switched laser- for high-speed treatment.

"There are different levels where you can focus the Q-switched Nd:YAG energy in the skin. The practitioner can go a little lighter or a bit deeper depending on the desired result and it is safe for the patient"

Martin Braun, M.D. Director The Vancouver Skin and Laser Centre
Vancouver, BC, Canada



Near Infrared Technology

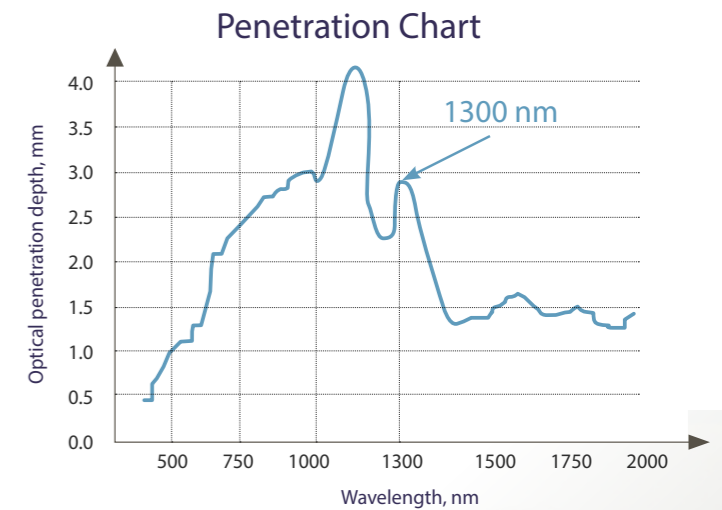
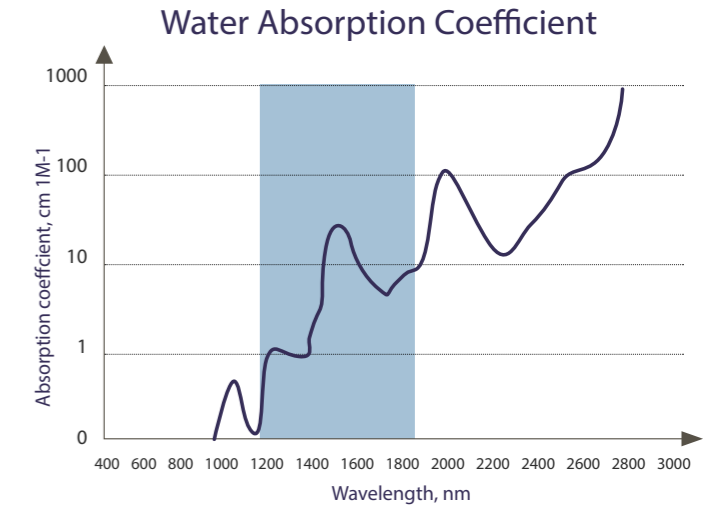
Alma Harmony's NIR module uses a high power light source in the near infrared spectrum to achieve safe and effective **sub-dermal heating**, stimulating the growth of new collagen and tightening laxity while also imparting a youthful glow to the skin.

The high power NIR lamp emits light within the near infrared spectrum to elevate dermal temperature, with peak power at 1300 nm for deep penetration. This mechanism causes **micro thermal injury** to the tissue which contracts existing fibers, stimulates the formation of new collagen and improves its alignment and thickness.

The procedure yields both short and long term benefits, with immediate skin tightening and glow as well as restructuring of the skin's architecture, helping to bolster the skin against future aging.

Procedures with the NIR module may be performed via a stationary delivery method or using the In-motion technique for gradual heat build-up and **comfortable treatment**.

The NIR module offers separate applicators for face and body. The ergonomic lightweight applicator design makes treatments more comfortable for practitioners with easy delegation to staff.



VASCULAR LESIONS

Greater precision for clear-cut results

The appearance of vascular lesions can be significantly reduced by inducing selective photothermolysis of the hemoglobin and oxy-hemoglobin chromophores in the target tissue. This can be achieved using Dye-VL technology, a long-pulsed Nd:YAG laser, or a combination of both for optimal results. Deep leg veins are most effectively treated using the long-pulsed Nd:YAG laser.

Dye-VL Technology

The Dye laser has traditionally been the treatment method of choice for the removal of the appearance of vascular lesions. Alma Harmony's Dye-VL module offers the first real alternative to this method, offering treatment that is just as effective as the Dye laser, with the safety, versatility and affordability of pulsed light.



Courtesy of:
Dr. Tania Meneghel, Sao Paulo, Brazil

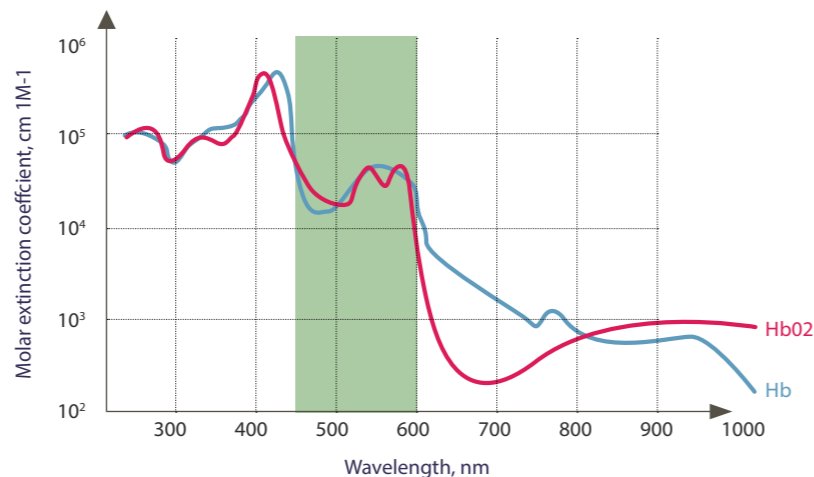
Courtesy of:
Dr. Dinko Kaliterna, 2013

" This technology is highly effective with great patient satisfaction, and there are no consumables"

*David J. Goldberg, M.D., J.D.
Dermatologist Director, Skin Laser & Surgery
Specialists of NY/NJ New York, NY*

Narrow-band Spectrum

Alma Harmony's Dye-VL technology harnesses light energy from a very precise narrow band spectrum, specifically targeted for the treatment of vascular lesions. A band pass filter limits the wavelength range to 450-600 nm for optimal absorption at the hemoglobin and oxy-hemoglobin chromophores. The selective photothermolysis of these chromophores removes the appearance of vascular lesions with excellent clinical results.



AFT™ Technology

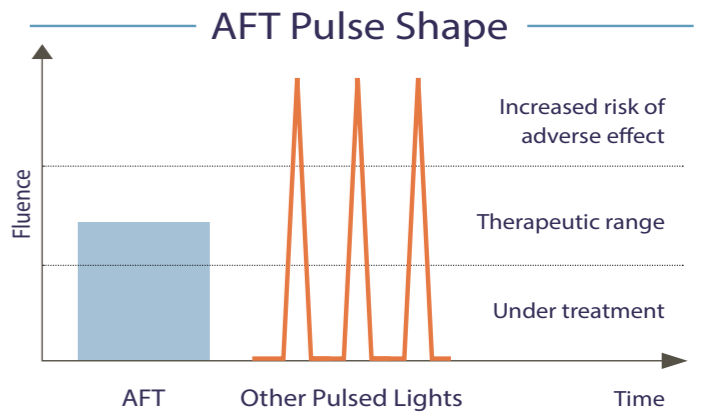
Harmony's Dye-VL module is based on Alma's proprietary Advanced Fluorescence Technology (AFT), an advanced form of intense pulsed light technology (IPL).

Rather than delivering a pulse with multiple wavelengths, many of which are outside the therapeutic range, AFT converts unused UV light to the optimal spectrum for more effective treatment.

This energy is then channeled into a pulse with *equal distribution fluence*, whereby uniform energy with controlled peak power is delivered throughout the entire pulse.

This minimizes the risk of adverse effects that can occur when patients are exposed to non-therapeutic energy densities and uncontrolled peaks.

AFT offers more efficient energy usage per pulse, increased safety, extended applicator lifetime and enhanced clinical results. The combination of Alma's exclusive Dye-VL and AFT technologies offers a safer and significantly more effective solution than other IPL-based treatment systems, with reliable, long-term results.



Contact Cooling

Simultaneous contact cooling using a cold sapphire tip cools the skin during treatment for longer periods of time, further minimizing the risk of superficial burns and resulting in more comfortable treatment for patients.

Dye-VL procedures can be performed via a stationary delivery method or using the In-motion™ technique for gradual heat build-up and increased patient comfort.

Cooled LP Nd:YAG 1064nm Laser

Alma Harmony's Cooled LP Nd:YAG laser offers a powerful solution to treat both vascular lesions and deep veins. The extended duration of the long-pulsed 1064 nm laser affords greater depth of penetration and more powerful heating, facilitating treatment of deeper lesions that cannot be targeted by shorter wavelengths. Additionally, 1064 nm infrared light is more readily absorbed by oxy-hemoglobin with relatively low absorption by melanin, triggering photothermolysis of the hemoglobin chromophore while avoiding damage to the epidermis.

The applicator features a unique open-angle view with an aiming beam which vastly improves visualization of blood vessels underneath the skin. Simultaneous contact cooling technology also incorporated into the applicator tip cools the skin during treatment for longer periods of time, further minimizing the risk of side effects and resulting in more comfortable treatment for patients.



Courtesy of:
BCK Patel, M.D., FRCS, Professor Chief, Division of Facial, Orbital and Oculoplastic Surgery, University of Utah, Salt Lake City, Utah, USA

PIGMENTED LESIONS

All-layer targeting of hyperpigmentation including for dark skin

The appearance of pigmented lesions can be successfully cleared by inducing selective photothermolysis of the melanin chromophore in the target tissue. This can be achieved for all layers of the pigmented lesion, as well as for lesions appearing in dark skin types, using Dye-SR technology, the Q-Switched Nd:YAG laser, or either approach with the addition of IMPACT technology for significantly enhanced results.

Dye-SR Technology

Like the Dye-VL module, Harmony's Dye-SR is based on Alma's proprietary AFT technology and a narrow band spectrum for the precise treatment of pigmented lesions. A band pass filter limits the wavelength range to 550-650 nm for optimal absorption by the melanin present in the lesion. The selective photothermolysis of the melanin chromophore removes the appearance of spots and pigmentation, achieving clearer skin with excellent clinical outcomes.

Dye-SR procedures can be performed via a stationary delivery method or using the In-motion™ technique for gradual heat build-up, and increased patient comfort. In-motion is especially indicated for treating dark skin types.

High Powered Q-Switched Nd:YAG laser

The high powered Q-Switched Nd:YAG laser is highly effective for treating various degrees and depths of pigmented lesions. The Q-Switched Nd:YAG 1064 nm laser treats deep pigmented lesions, while the KTP adaptor doubles the laser frequency to 532 nm, addressing superficial pigmented lesions.

Photo acoustic shockwaves are delivered to the target area through high laser intensities in nanosecond pulses, **creating controlled dermal wounds**. This mechanical Q-Switched effect breaks up the melanin in pigmented lesions while keeping the epidermis intact. As the area heals, the immune system flushes away the damaged pigmented cells and reveals lighter, unblemished skin.



*"Alma, as the first fractional Q-Switched laser, is **highly effective** for treating various degrees and depths of pigmented lesions resulting in lighter and unblemished skin."*

Courtesy of Michael H. Gold, M.D., Medical Director, Gold Skin Care Center, Nashville TN, USA

IMPACT™

Fractional ablative laser treatments are known to yield highly effective results for a variety of indications. However, combining these with the application of active ingredients serves to maintain and significantly augment results.

Harmony's IMPACT module uses ultrasound technology to deliver active ingredients beyond the epidermal-dermal junction. Once the skin is perforated via a fractional laser, the IMPACT module emits acoustic waves and air pressure, pushing the topical compounds through the micro-channels. The acoustic vibrations create a push and pull effect within the channels, releasing the buildup of intracellular fluid and allowing the active ingredients to reach the targeted tissue depth. Histology performed after the use of IMPACT technology have proven efficacy in advancing active ingredients to the deeper layers of the skin.

The synergy of fractional ablation and IMPACT technology offers a compound solution for maximally effective skin repair and aesthetic enhancement.



Courtesy of: JongMin Park, MD

Following 1 treatment

Courtesy of: Lehavit Akerman, MD

Following 4 treatments

04 TONE & TEXTURE

Smooth, balanced skin- with minimal downtime

Uneven skin tone, superficial pigmentation and coarse, uneven skin texture can be dramatically improved using a fractional Er:YAG laser, Near Infrared technology, or either approach with the addition of IMPACT technology for significantly enhanced results.

Pixel Er:YAG 2940™

The Pixel Er:YAG module provides a highly effective **fractional ablative laser skin** resurfacing treatment using an Erbium YAG laser at a 2940 nm wavelength. Pixel significantly improves overall skin tone, elasticity and texture, increases moisture content, and reduces superficial pigmentation and pore size. The treatment mechanism of the Er:YAG 2940 laser promotes accelerated re-epithelization allowing for faster healing and tissue regeneration.

Unlike traditional ablative laser resurfacing which removes the entire top layer of the skin, a 7x7 2940 Er:YAG employs a fractional delivery method which creates pixel-sized perforations in the skin, leaving the surrounding tissue intact. This allows the skin to heal faster as the epidermis is regenerated.

The **Pixel Scan** in its 1X7 pixel configuration speeds up treatment time, allowing for deeper penetration and **higher powered ablation**, yielding enhanced results.

i Latest Innovations

Thermal mode with a 10mm spot size which allows for a controlled temperature rise in the epidermis-dermis level without damaging the upper skin layers of the tissue.

The 10mm spot size used In-Motion provides a therapeutic 100cm² grid where the laser's fast pulsation radiation is absorbed in the uppermost skin layers while heat is transferred to the dermis.

NIR™

As in Harmony's **skin remodeling** treatment solutions, the NIR module uses a high power light source in the near infrared spectrum to achieve safe and effective **sub-dermal heating**, stimulating the growth of new collagen, imparting a youthful glow to the skin and helping to bolster the skin against future aging.

IMPACT™

Fractional laser treatments are known to yield highly effective results for a variety of indications. However, combining these with the application of active ingredients serves to maintain and significantly augment results.

As in Harmony's treatment solutions for **pigmented lesions**, the synergy of fractional ablation and IMPACT technology offers a compound solution for maximally effective skin repair and aesthetic enhancement.

05 HAIR REMOVAL

Virtually painless hair removal for all skin types, all-year round

i Latest Innovations

The new Speed AFT™

Harmony's Speed AFT module achieves highly effective hair removal by delivering light energy at a wavelength range of 650-950 nm for optimal absorption by the melanin within the hair follicle, without damaging the surrounding tissue. Speed AFT is based on Alma's proprietary Advanced Fluorescence Technology (AFT™) and Super Hair Removal (SHR™) method.

The Speed AFT module features a large spot size applicator that allows you to quickly treat larger areas and perform more treatment sessions in less time, while offering your patients the fastest and most effective hair removal possible.

SHR™

Alma's Super Hair Removal (SHR) method works by *gradually* heating the dermis to a temperature that effectively damages the hair follicles and prevents re-growth, while avoiding injury to the surrounding tissue. Rather than exposing the hair follicle to a single high energy pulse, **a high repetition rate** of short pulses are delivered deep into the dermis, achieving high average power and therapeutically effective heat build-up, damaging hair follicles with virtually no pain felt by the patient.

The sweeping **In-Motion™** technique used with SHR involves moving the applicator repeatedly over the treatment area, applying energy over a large grid- not just the area of the hair follicle. This ensures **full coverage** during treatment which significantly improves results.

Strong contact cooling technology using a cold sapphire tip to cool the skin during treatment, preventing superficial burns and resulting in more comfortable treatment for patients.

SHR has been clinically proven to be the **safest** method of hair removal for **all skin types**. The unique heating and energy delivery method avoids trauma to skin with a high melanin count, making it safe and effective for **even dark and tanned skin**.



Courtesy of:
Dr. Zimmermen, Las Vegas, Nevada, USA



Courtesy of:
Alma Lasers Clinical Department



06

ACNE

Defeating active acne, with lasting results



i Latest Innovations

The new **ClearSkin™** with Cooled ER:Glass 1540 Laser w/Vacuum

ClearSkin is the first technology to combine a non-ablative laser with simultaneous **contact cooling** and vacuum technology to treat acne vulgaris safely and effectively.

The **non-ablative** ER:Glass 1540 nm laser deeply penetrates the skin, causing thermal damage to the sebaceous glands, destroying P. acnes bacteria and reducing sebum production, while leaving the epidermis intact. The integrated **vacuum** mechanism extracts accumulated sebaceous material from the pores, while contact cooling protects the skin, reducing pain and allowing for safer and more effective treatment of the sebaceous glands within the dermis.

The Cooled ER:Glass laser with Vacuum treatment addresses all forms of acne vulgaris including papules, pustules, and nodules, while also achieving a gentle rejuvenating effect, diminishing the appearance of acne scars by stimulating collagen renewal. The treatment is suitable for all skin types, has no side effects and achieves a smoother complexion with lasting results.

"Treating patients with acne vulgaris using the unique Er:Glass 1540 laser supported with vacuum and cooling, proved to be effective - showing **significant improvement** with no side effects."

Prof. Moshe Lapidoth, Dermatologist Head of the Laser Unit, Dermatology Dep., Rabin Medical Center, Petach Tikva, Israel



Courtesy of:
Prof. Moshe Lapidoth & Dr. Yael Politi

ADDITIONAL INDICATIONS

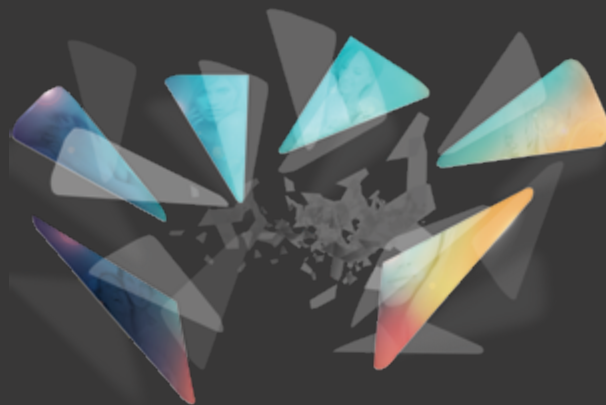
Multi-color Tattoo Removal

Successful multi-color tattoo removal requires a high powered laser that can deliver enough energy within the absorption spectrum of a wide range of colors.

The high power Q-Switched Nd:YAG 1064 nm laser is ideal for treating darker ink colors (black, blue and green), while the 532 nm wavelength is effective for brighter ink colors (red, orange and yellow). The mechanical Q-Switched effect works by vibrating and breaking down the ink particles in the tattoo. As the area heals, the body's immune system flushes away the shattered ink particles, causing the tattoo to fade with minimal risk of scarring or hypopigmentation.



Courtesy of:
Dinko Kaliterna, MD



Alma
Harmony XL PRO
Spectrum of Solutions

Alma GmbH

Nordostpark 100-102
90411 Nürnberg, Germany
Tel. + 49-911 / 89-11-29-0
Fax + 49-911 / 89-11-29-99
info@alma-lasers.de
www.alma-lasers.de

© 2018 Alma

All rights reserved. Alma, its logo, AFT, Alma, ClearLift, ClearSkin, Dye-VL, Harmony, IMPACT, SHR, Speed, are trademarks and/or registered trademarks of Alma Lasers in the United States and/or other countries.

info@almalasers.com
www.harmonyxlpro.com

Connect
with Alma

